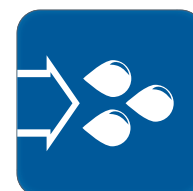


# DATA SHEET

## High Pressure Dust Suppression Systems



**HPW-DUST  
EPW-DUST AC  
EPW-DUST DC**



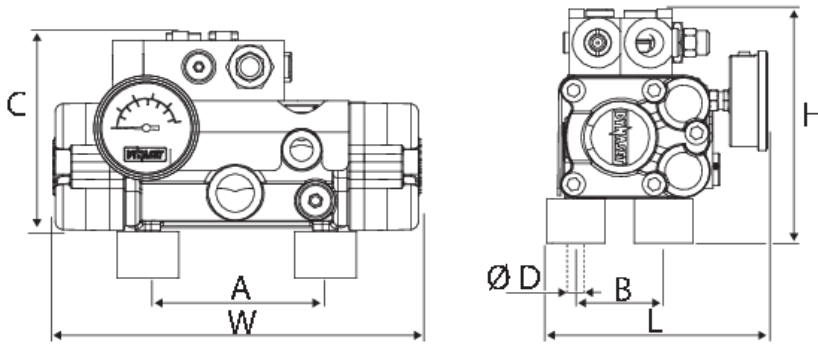


# HIGH PRESSURE DUST SUPPRESSION SYSTEMS TABLE OF CONTENTS

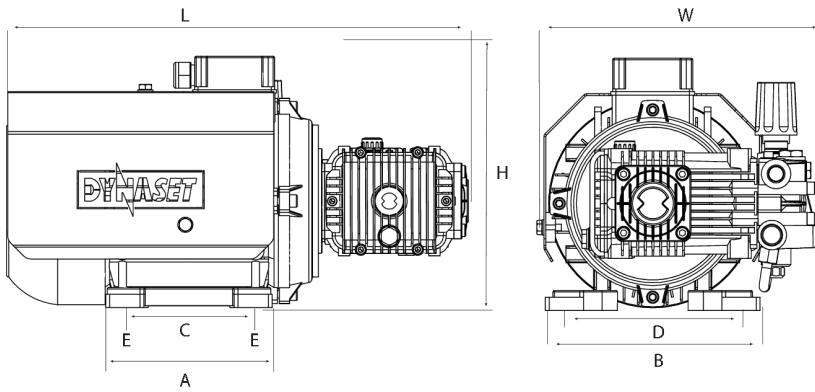
v.1.6 01/2025 WNu

<b>1. DIMENSIONS .....</b>	<b>4</b>
<b>2. CONNECTIONS .....</b>	<b>6</b>
<b>3. TECHNICAL SPECIFICATIONS .....</b>	<b>11</b>

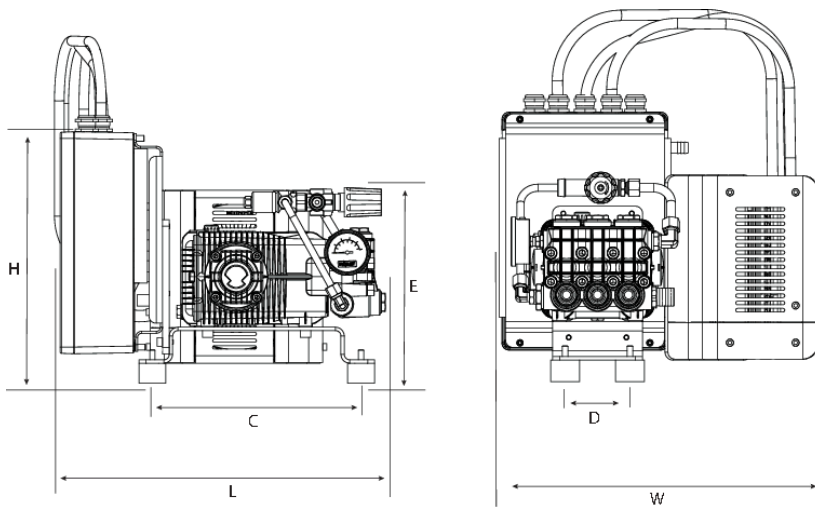
## 1. DIMENSIONS



Picture 1: HPW-DUST



Picture 2: EPW-DUST AC



Picture 3: EPW-DUST DC

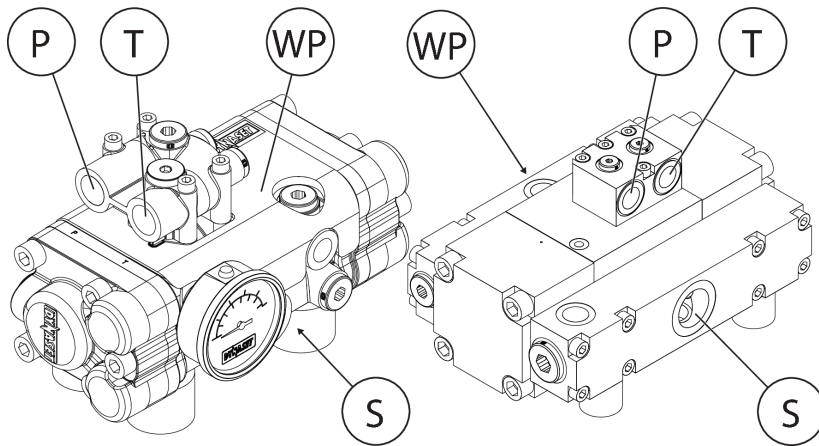


## HIGH PRESSURE DUST SUPPRESSION SYSTEMS DIMENSIONS

Model	Dimensions, mm (in)								Weight
	L	W	H	A	B	C	D	E	kg (lbs)
<b>HPW-DUST 250 Dust For Crusher - One Conveyor</b>	167 (6.6)	238 (9.4)	160 (6.3)	115 (4.5)	60 (2.4)	129 (5.1)	8 (0.3)	( )	11 (24)
<b>HPW-DUST 220 Dust For Crusher - Two Conveyors</b>	151 (5.9)	280 (11.0)	224 (8.8)	126 (5.0)	106 (4.2)	194 (7.6)	8 (0.3)	( )	18 (40)
<b>HPW-DUST 220 Dust For Crusher - Three Conveyors</b>	151 (5.9)	280 (11.0)	224 (8.8)	126 (5.0)	106 (4.2)	194 (7.6)	8 (0.3)	( )	18 (40)
<b>HPW-DUST 250 Dust For Excavator</b>	167 (6.6)	238 (9.4)	160 (6.3)	115 (4.5)	60 (2.4)	129 (5.1)	8 (0.3)	( )	11 (24)
<b>HPW-DUST 250 Dust For Excavator - Double Dust</b>	167 (6.6)	238 (9.4)	160 (6.3)	115 (4.5)	60 (2.4)	129 (5.1)	8 (0.3)	( )	11 (24)
<b>HPW-DUST 220 Dust for Excavator - Double Dust</b>	151 (5.9)	280 (11.0)	224 (8.8)	126 (5.0)	106 (4.2)	194 (7.6)	8 (0.3)	( )	18 (40)
<b>HPW-DUST 90Dust for Excavator</b>	175 (6.9)	345 (13.6)	250 (9.8)	252 (9.9)	95 (3.7)	250 (9.8)	10 (0.4)	( )	31 (68)
<b>HPW-DUST 90Dust for Excavator - Double Dust</b>	175 (6.9)	345 (13.6)	250 (9.8)	252 (9.9)	95 (3.7)	250 (9.8)	10 (0.4)	( )	31 (68)
<b>HPW-DUST 160 Dust for Sweeper</b>	210 (8.3)	100 (3.9)	110 (4.3)	74 (2.9)	64 (2.5)	100 (3.9)	6 (0.2)	( )	6.2 (14)
<b>EPW-DUST AC 150-15 For Crusher - One Conveyor</b>	535 (21.1)	313 (12.3)	264 (10.4)	175 (6.9)	225 (8.9)	190 (7.5)	140 (5.5)	11 (0.4)	38 (84)
<b>EPW-DUST DC 200-30 For Crusher - One Conveyor</b>	492 (19.4)	442 (17.4)	373 (14.7)	( )	( )	310 (12.2)	90 (3.5)	287 (11.3)	57 (126)
<b>EPW-DUST DC 200-50 For Crusher - Two Conveyors</b>	507 (20.0)	458 (18.0)	373 (14.7)	( )	( )	310 (12.2)	90 (3.5)	287 (11.3)	59 (130)

## 2. CONNECTIONS

### HPW-DUST



Picture 4: HPW-DUST

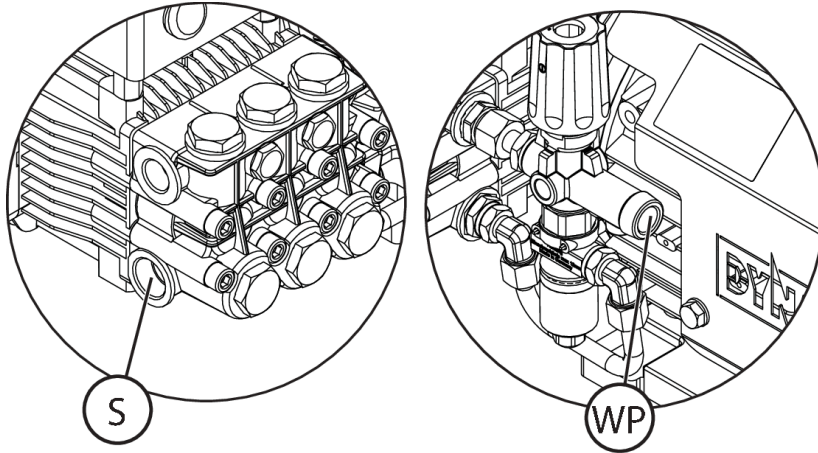
Model	Hydraulic Connections		Electric Connections
	P, Pressure line (female)	T, Return line (male)	Electric connector (solenoid valve)
<b>HPW-DUST 250 Dust For Crusher - One Conveyor</b>	BSPP 1/2	BSPP 1/2	DIN 43650-A
<b>HPW-DUST 220 Dust For Crusher - Two Conveyors</b>	BSPP 3/4	BSPP 3/4	DIN 43650-A
<b>HPW-DUST 220 Dust For Crusher - Three Conveyors</b>	BSPP 3/4	BSPP 3/4	DIN 43650-A
<b>HPW-DUST 250 Dust For Excavator</b>	BSPP 1/2	BSPP 1/2	DIN 43650-A
<b>HPW-DUST 250 Dust For Excavator - Double Dust</b>	BSPP 1/2	BSPP 1/2	DIN 43650-A
<b>HPW-DUST 220 Dust for Excavator - Double Dust</b>	BSPP 3/4	BSPP 3/4	DIN 43650-A
<b>HPW-DUST 90Dust for Excavator</b>	BSPP 3/4	BSPP 3/4	DIN 43650-A
<b>HPW-DUST 90Dust for Excavator - Double Dust</b>	BSPP 3/4	BSPP 3/4	DIN 43650-A
<b>HPW-DUST 160 Dust for Sweeper</b>	BSPP 3/8	BSPP 3/8	DIN 43650-A



## HIGH PRESSURE DUST SUPPRESSION SYSTEMS CONNECTIONS

Model	Water Connections	
	Water Output, WP	Water Input, S
<b>HPW-DUST 250 Dust For Crusher - One Conveyor</b>	BSPP 3/8	BSPP3/4
<b>HPW-DUST 220 Dust For Crusher - Two Conveyors</b>	BSPP 1/2	BSPP 1
<b>HPW-DUST 220 Dust For Crusher - Three Conveyors</b>	BSPP 1/2	BSPP 1
<b>HPW-DUST 250 Dust For Excavator</b>	BSPP 3/8	BSPP3/4
<b>HPW-DUST 250 Dust For Excavator - Double Dust</b>	BSPP 3/8	BSPP3/4
<b>HPW-DUST 220 Dust for Excavator - Double Dust</b>	BSPP 1/2	BSPP 1
<b>HPW-DUST 90Dust for Excavator</b>	BSPP 1	BSPP 2
<b>HPW-DUST 90Dust for Excavator - Double Dust</b>	BSPP 1	BSPP 2
<b>HPW-DUST 160 Dust for Sweeper</b>	BSPP 3/8	BSPP3/4

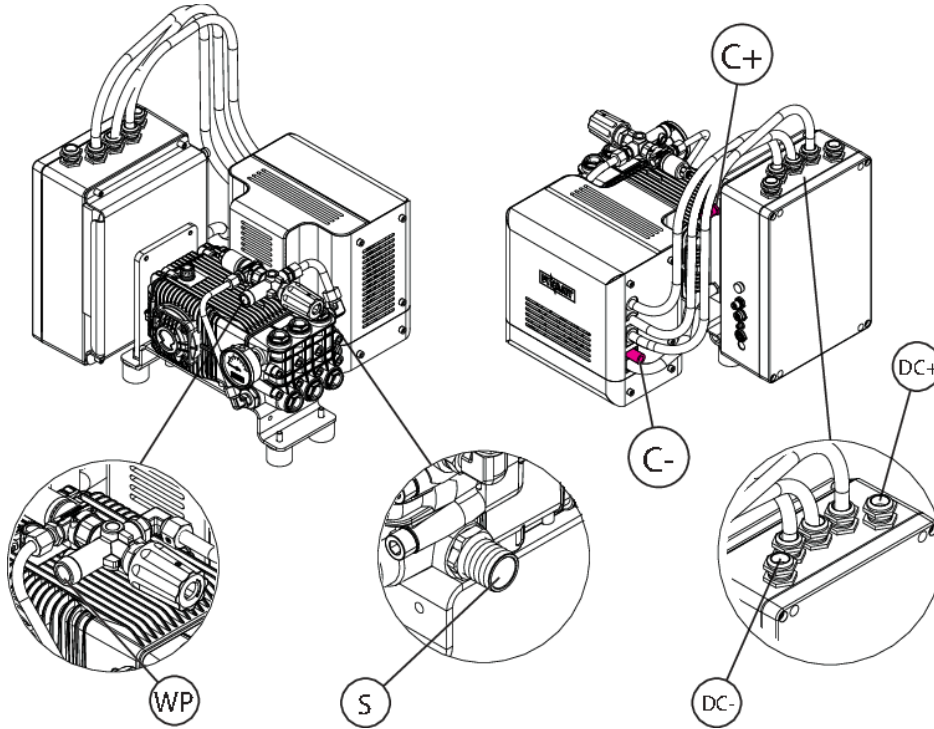
## EPW-DUST AC



Picture 5: EPW-DUST AC

Model	Water Connections	
	Water Output, WP	Water Input, S
EPW-DUST AC 150-15 For Crusher - One Conveyor	BSPP 3/8	BSPP 1/2

## EPW-DUST DC



Picture 6: EPW-DUST DC

Model	Water Connections	
	Water Output, WP	Water Input, S
EPW-DUST DC 200-30 For Crusher - One Conveyor	BSPP 3/8	BSPP3/4
EPW-DUST DC 200-50 For Crusher - Two Conveyors	BSPP 3/8	BSPP 3/4

Model	Electric Connections					
	Supply Voltage, DC +/-	Wire size, DC, mm <sup>2</sup>	1	2	3	4
EPW-DUST DC 200-30 For Crusher - One Conveyor	M10	25	Option	Main Interface	Dynaset Harness	Display
EPW-DUST DC 200-50 For Crusher - Two Conveyors	M10	25	Option	Main Interface	Dynaset Harness	Display

Model	Coolant Connections		Coolant Hose Size	
	Coolant In, C+ , mm (in)	Coolant Out, C- , mm (in)	Coolant In, C+ , mm (in)	Coolant Out, C- , mm (in)
<b>EPW-DUST DC 200-30 For Crusher - One Conveyor</b>	BSPP 1/4	BSPP 1/4	Ø 10 (0.4)	Ø 10 (0.4)
<b>EPW-DUST DC 200-50 For Crusher - Two Conveyors</b>	BSPP 1/4	BSPP 1/4	Ø 10 (0.4)	Ø 10 (0.4)

## 3. TECHNICAL SPECIFICATIONS

### HPW-DUST

		HPW-DUST 250 Dust For Crusher - One Conveyor	HPW-DUST 220 Dust For Crusher - Two Conveyors	HPW-DUST 220 Dust For Crusher - Three Conveyors
<b>WATER POWER</b>				
Basic flow @ recommended pressure	<b>l/min (gpm)</b>	26.6 (7.03)	34.6 (9.14)	42.6 (11.25)
High Power flow @ recommended pressure	<b>l/min (gpm)</b>	( )	( )	( )
Pressure recommended	<b>bar (psi)</b>	140 (2'031)	140 (2'031)	140 (2'031)
Pressure max	<b>bar (psi)</b>	250 (3'626)	220 (3'191)	220 (3'191)
Pump max. flow	<b>l/min (gpm)</b>	30 (7.93)	50 (13.21)	50 (13.21)
Nozzles (basic)	<b>pcs</b>	4	5	6
High power nozzles	<b>pcs</b>	-	-	-
<b>WATER INTAKE REQUIREMENTS</b>				
Recommended suction hose size	<b>in</b>	3/4	1	1
Suction filter flow min	<b>l/min (gpm)</b>	50 (13.21)	80 (21.14)	80 (21.14)
Recommended filter mesh	<b>mesh</b>	25	25	25
Suction head max	<b>m (ft)</b>	m (ft)	m (ft)	m (ft)
Feed pressure	<b>bar (psi)</b>	-3 (-44) - 16 (232)	-0.3 (-4) - 16 (232)	-0.3 (-4) - 16 (232)
<b>HYDRAULIC POWER REQUIREMENTS</b>				
Flow max.	<b>l/min (gpm)</b>	40 (10.57)	70 (18.49)	70 (18.49)
Pressure max.	<b>bar (psi)</b>	210 (3'046)	210 (3'046)	210 (3'046)
<b>HYDRAULIC FLUID REQUIREMENTS</b>				
Viscosity	<b>cSt</b>	10 200 / optimum 25 35	10 200 / optimum 25 35	10 200 / optimum 25 35
Temperature max.	<b>°C(°F)</b>	70 (158)	70 (158)	70 (158)
Filter ratio	<b>µm</b>	25	25	25
Cooling capacity requirement	<b>kW</b>	2.5	3	3
All rights to changes reserved.				



# HIGH PRESSURE DUST SUPPRESSION SYSTEMS TECHNICAL SPECIFICATIONS

		HPW-DUST 250 Dust For Excavator	HPW-DUST 250 Dust For Excavator - Double Dust	HPW-DUST 220 Dust for Excavator - Double Dust
<b>WATER POWER</b>				
Basic flow @ recommended pressure	<b>l/min (gpm)</b>	21.2 (5.60)	10.6 (2.80)	21.2 (5.60)
High Power flow @ recommended pressure	<b>l/min (gpm)</b>	( )	21.2 (5.60)	42.4 (11.20)
Pressure recommended	<b>bar (psi)</b>	140 (2'031)	140 (2'031)	140 (2'031)
Pressure max	<b>bar (psi)</b>	250 (3'626)	250 (3'626)	220 (3'191)
Pump max. flow	<b>l/min (gpm)</b>	30 (7.93)	30 (7.93)	50 (13.21)
Nozzles (basic)	<b>pcs</b>	4	2	2
High power nozzles	<b>pcs</b>	-	2	2
<b>WATER INTAKE REQUIREMENTS</b>				
Recommended suction hose size	<b>in</b>	3/4	3/4	1
Suction filter flow min	<b>l/min (gpm)</b>	50 (13.21)	50 (13.21)	80 (21.14)
Recommended filter mesh	<b>mesh</b>	25	25	25
Suction head max	<b>m (ft)</b>	m (ft)	m (ft)	m (ft)
Feed pressure	<b>bar (psi)</b>	-0.3 (-4) - 16 (232)	-0.3 (-4) - 16 (232)	-0.3 (-4) - 16 (232)
<b>HYDRAULIC POWER REQUIREMENTS</b>				
Flow max.	<b>l/min (gpm)</b>	40 (10.57)	40 (10.57)	70 (18.49)
Pressure max.	<b>bar (psi)</b>	210 (3'046)	210 (3'046)	210 (3'046)
<b>HYDRAULIC FLUID REQUIREMENTS</b>				
Viscosity	<b>cSt</b>	10 200 / optimum 25 35	10 200 / optimum 25 35	10 200 / optimum 25 35
Temperature max.	<b>°C(°F)</b>	70 (158)	70 (158)	70 (158)
Filter ratio	<b>µm</b>	25	25	25
Cooling capacity requirement	<b>kW</b>	3	2.5	3
All rights to changes reserved.				



# HIGH PRESSURE DUST SUPPRESSION SYSTEMS TECHNICAL SPECIFICATIONS

		HPW-DUST 90Dust for Excavator	HPW-DUST 90Dust for Excavator - Double Dust	HPW-DUST 160 Dust for Sweeper
<b>WATER POWER</b>				
Basic flow @ recommended pressure	<b>l/min (gpm)</b>	85 (22.46)	42.5 (11.23)	11.9 (3.14)
High Power flow @ recommended pressure	<b>l/min (gpm)</b>	( )	85 (22.46)	( )
Pressure recommended	<b>bar (psi)</b>	90 (1'305)	90 (1'305)	140 (2'031)
Pressure max	<b>bar (psi)</b>	90 (1'305)	90 (1'305)	160 (2'321)
Pump max. flow	<b>l/min (gpm)</b>	150 (39.63)	150 (39.63)	18 (4.76)
Nozzles (basic)	<b>pcs</b>	4	2	9
High power nozzles	<b>pcs</b>	-	2	-
<b>WATER INTAKE REQUIREMENTS</b>				
Recommended suction hose size	<b>in</b>	1	1	1/2
Suction filter flow min	<b>l/min (gpm)</b>	80 (21.14)	80 (21.14)	80 (21.14)
Recommended filter mesh	<b>mesh</b>	25	25	25
Suction head max	<b>m (ft)</b>	m (ft)	m (ft)	m (ft)
Feed pressure	<b>bar (psi)</b>	-0.3 (-4) - 16 (232)	-0.3 (-4) - 16 (232)	-0.3 (-4) - 16 (232)
<b>HYDRAULIC POWER REQUIREMENTS</b>				
Flow max.	<b>l/min (gpm)</b>	85 (22.46)	85 (22.46)	18 (4.76)
Pressure max.	<b>bar (psi)</b>	210 (3'046)	210 (3'046)	210 (3'046)
<b>HYDRAULIC FLUID REQUIREMENTS</b>				
Viscosity	<b>cSt</b>	10 200 / optimum 25 35	10 200 / optimum 25 35	10 200 / optimum 25 35
Temperature max.	<b>°C(°F)</b>	70 (158)	70 (158)	70 (158)
Filter ratio	<b>µm</b>	25	25	25
Cooling capacity requirement	<b>kW</b>	4	4	1
All rights to changes reserved.				

## EPW-DUST AC

EPW-DUST AC 150-15 For  
Crusher - One Conveyor

<b>WATER POWER</b>		
Flow, max	<b>l/min (gpm)</b>	15 (3.96)
Pressure max	<b>bar (psi)</b>	150 (2'176)
Nozzles (basic)	<b>pcs</b>	4
<b>WATER INTAKE REQUIREMENTS</b>		
Suction head max	<b>m (ft)</b>	( )
Feed pressure	<b>bar (psi)</b>	1 (15) - 3 (44)
Recommended filter mesh	<b>mesh</b>	80
<b>ELECTRIC MOTOR SPECIFICATIONS</b>		
Power max.	<b>kW</b>	4
Voltage	<b>VAC</b>	400
Current max.	<b>A</b>	9.4
Motor RPM		1400
IP		55
All rights to changes reserved.		



# HIGH PRESSURE DUST SUPPRESSION SYSTEMS TECHNICAL SPECIFICATIONS

## EPW-DUST DC

		EPW-DUST DC 200-30 For Crusher - One Conveyor	EPW-DUST DC 200-50 For Crusher - Two Conveyors
<b>WATER POWER</b>			
Flow, max	<b>l/min (gpm)</b>	30 (7.93)	50 (13.21)
Pressure max	<b>bar (psi)</b>	200 (2'901)	200 (2'901)
Nozzles (basic)	<b>pcs</b>	4	5
<b>WATER INTAKE REQUIREMENTS</b>			
Suction head max	<b>m (ft)</b>	m (ft)	m (ft)
Feed pressure	<b>bar (psi)</b>	2 (29) - 3 (44)	2 (29) - 3 (44)
Recommended filter mesh	<b>mesh</b>	80	80
<b>ELECTRIC MOTOR SPECIFICATIONS</b>			
Voltage, nominal	<b>VDC</b>	400	400
Voltage range	<b>VDC</b>	400-700	400-700
Current, max.	<b>A</b>	45	45
Control voltage	<b>VDC</b>	12-24	12-24
Control current (inrush current)	<b>A</b>	2 (4)	2 (4)
IP (Classification for electric components)		65	65
<b>COOLING REQUIREMENTS</b>			
Coolant Fluid	<b>Water / Glycol</b>	50% / 50%	50% / 50%
Coolant Flow, required	<b>l/min (gpm)</b>	5 (1.32)	5 (1.32)
Coolant System Pressure, max	<b>bar (psi)</b>	2 (29)	2 (29)
Coolant Temperature, max	<b>°C ( °F)</b>	50 (122)	50 (122)
Coolant Capacity Requirement*	<b>kW</b>	2.8	4.3
*NTP environment All rights to changes reserved.			



# HIGH PRESSURE DUST SUPPRESSION SYSTEMS TECHNICAL SPECIFICATIONS

---



**PARTNER OF YOUR MACHINE**

Menotie 3  
FI-33470 Ylöjärvi, Finland  
tel: +358 3 3488 200  
info@DYNASET.com



#### ELECTRICITY

HG Hydraulic Generator  
HGV POWER BOX Variable Hydraulic  
Generator System  
HGV Variable Hydraulic Generator System  
HWG Hydraulic Welding Generator  
HGG Hydraulic Ground Power Generator



#### HIGH PRESSURE WATER

HPW Hydraulic High Pressure Water Pump  
HPW Hydraulic Power Washer  
KPL High Pressure Street Washing Unit  
KPL-WEED Weed Killing Unit  
SCU Surface Cleaning Unit  
HPW-DUST High Pressure Dust Suppression  
System  
PPL High Pressure Pipe Cleaning Unit  
HPW-FIRE High Pressure Firefighting System  
FP Fire Fighting Piercing Kit  
HDF Hydraulic Drilling Fluid Pump  
JPL High Pressure Bin Washing System  
HSP Hydraulic Submersible Pump



#### COMPRESSED AIR

HK Hydraulic Piston Compressor  
HKL Hydraulic Rotary Vane Compressor  
HKR Hydraulic Screw Compressor



#### MAGNET POWER

HMG PRO Hydraulic Magnet Generator  
MAG Lift Magnet  
HMAG PRO Hydraulic Magnet



#### VIBRATION

HVB Hydraulic Vibration Pump  
HVD Hydraulic Directional Vibra  
HRC Hydraulic Reversal Cylinder



#### POWER BOOSTING

HPI Hydraulic Pressure Intensifier  
HPI-C Hydraulic Pressure Intensifier for  
Cylinder



#### VACUUM

HCF Hydraulic Centrifugal Fan  
HRVB Hydraulic Recycling Vacuum Bucket



#### KNOW-HOW

Hydraulic Power Take-off (PTO)  
Hydraulic Power Unit Technology  
HEU Hydraulic Expansion Unit  
HRU Hydraulic Rescue Units  
De-Icing Technology  
Installation Valves  
HHK Hydraulic Grinder  
HV/HVY Hydraulic Winch / Winch Unit

[www.DYNASET.com](http://www.DYNASET.com)



[/dynaset](https://www.facebook.com/dynaset)



[/dynasetoy](https://www.youtube.com/dynasetoy)



[/Dynaset\\_ofcl](https://twitter.com/Dynaset_ofcl)



[/dynaset\\_official](https://www.instagram.com/dynaset_official)