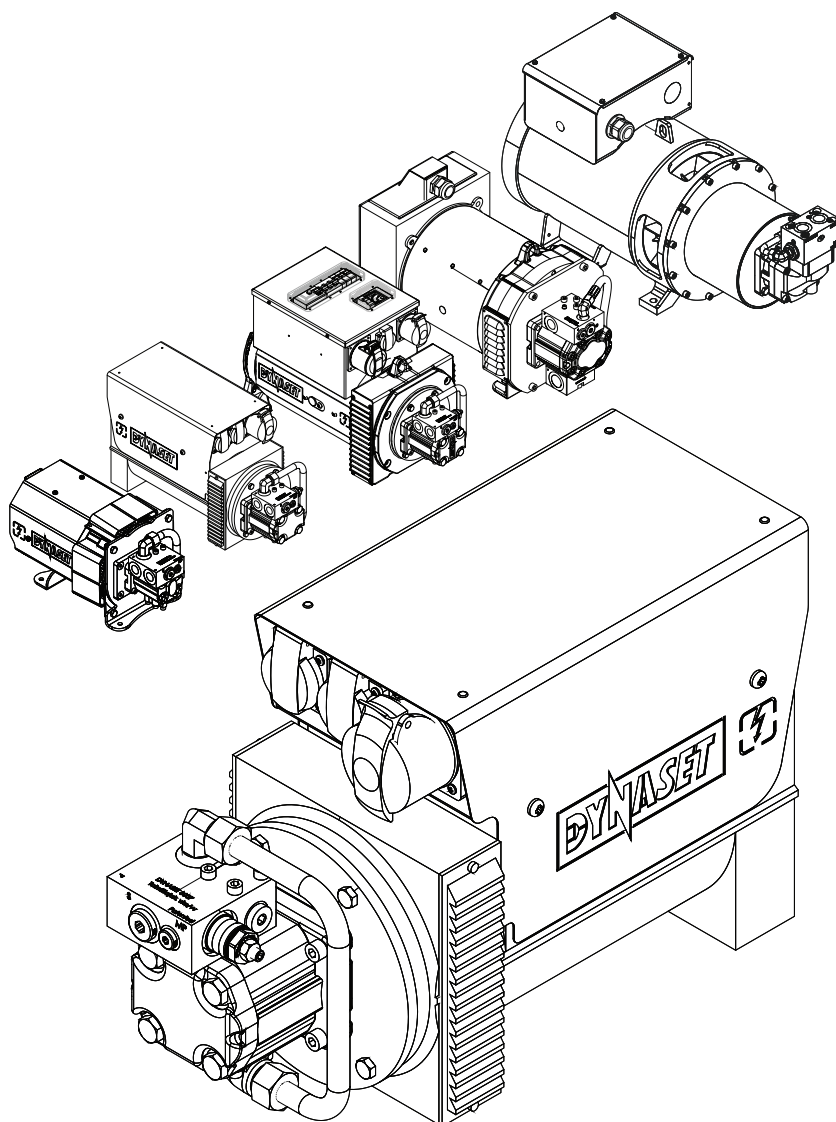




PARTNER OF YOUR MACHINE



DATASHEET
HG Hydraulic Generators





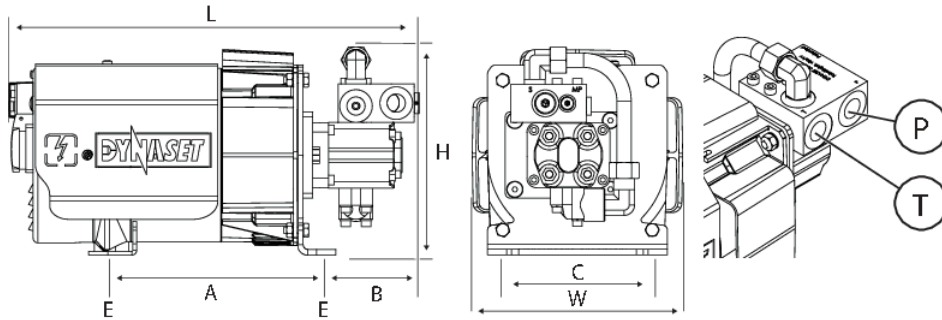
HG HYDRAULIC GENERATORS TABLE OF CONTENTS

v.1.8 10/2025 WNu

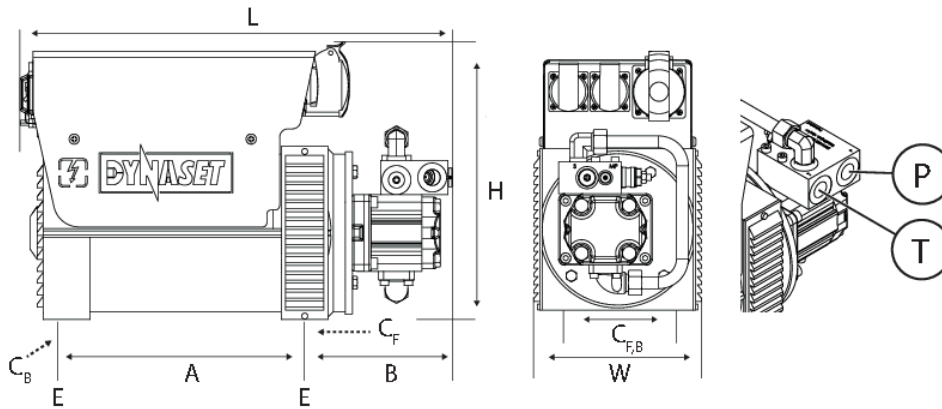
1. 50HZ IP23 SUPER COMPACT MODELS	3
2. 50HZ IP54 MODELS	11

1. 50HZ IP23 SUPER COMPACT MODELS

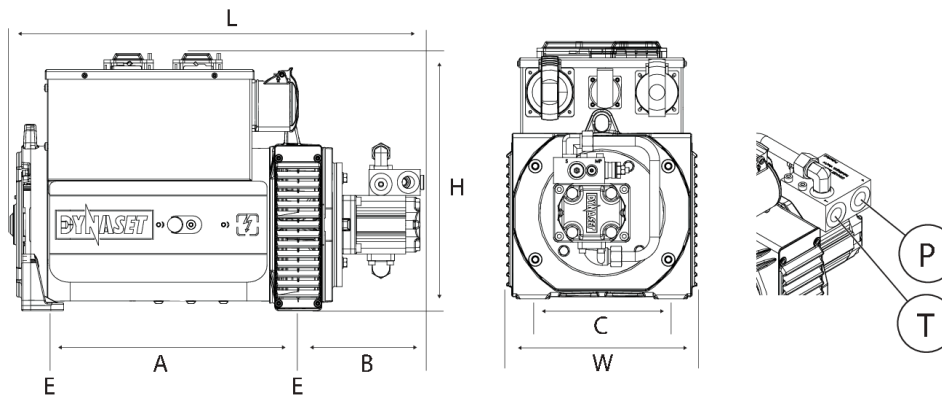
HG3,5S, HG5S



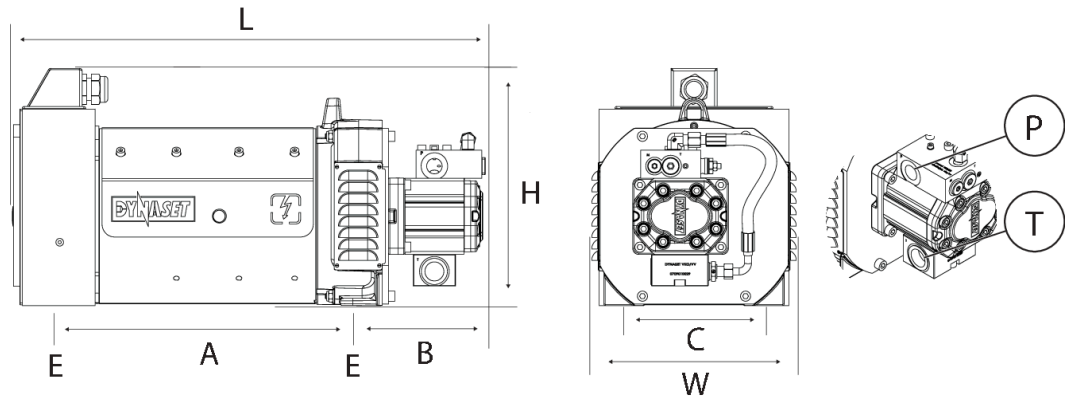
HG6,5E, HG10E, HG12F



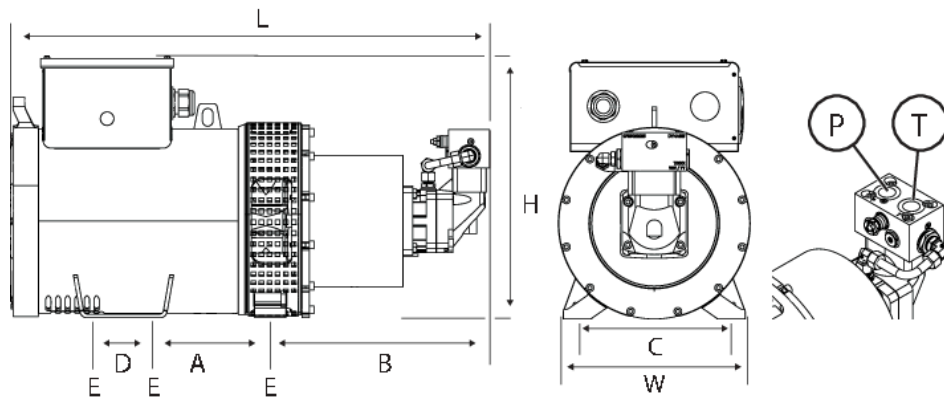
HG19G



HG26G, HG35G



HG45C, HG65C, HG80C



DIMENSIONS & CONNECTIONS

SOCKET MODELS

Model	Dimensions, mm (in)										Weight	
	L	W	H	A	B	C	CF	CB	E	kg (lbs)		
HG3.5S-SE230SE23-15-VF	423 (16.7)	220 (8.7)	217 (8.5)	224.5 (8.8)	99 (3.9)	150 (5.9)	()	()	9 (0.4)	26 (57)		
HG5S-E230SE23-21-VF	461 (18.1)	212 (8.3)	230 (9.1)	250 (9.8)	96 (3.8)	150 (5.9)	()	()	9 (0.4)	29 (64)		
HG6.5E-E400SS23-34-VF	508 (20.0)	212 (8.3)	326 (12.8)	282 (11.1)	178 (7.0)	()	160 (6.3)	110 (4.3)	12 (0.5)	43 (95)		
HG10E-E400SS23-49-VF	567 (22.3)	212 (8.3)	326 (12.8)	338 (13.3)	178 (7.0)	()	160 (6.3)	110 (4.3)	12 (0.5)	57 (126)		
HG12F-E400SS23-54-VF	587 (23.1)	290 (11.4)	352 (13.9)	345 (13.6)	184 (7.2)	200 (7.9)	()	()	12 (0.5)	60 (132)		
HG19G-E400SS23-63-VF	678 (26.7)	293 (11.5)	395 (15.6)	376.5 (14.8)	185 (7.3)	220 (8.7)	()	()	12.5 (0.5)	120 (265)		
HG19G-E400SS23-79-VF	678 (26.7)	293 (11.5)	395 (15.6)	376.5 (14.8)	185 (7.3)	220 (8.7)	()	()	12.5 (0.5)	120 (265)		

CABLE MODELS

Model	Dimensions, mm (in)										Weight	
	L	W	H	A	B	C	CF	CB	D	E	kg (lbs)	
HG3.5S-SE230SE23-15-VF	439 (17.3)	220 (8.7)	215 (8.5)	223 (8.8)	96.6 (3.8)	150 (5.9)	()	()	()	9 (0.4)	26 (57)	
HG5S-E230SE23-21-VF	463 (18.2)	220 (8.7)	215 (8.5)	247 (9.7)	98 (3.9)	150 (5.9)	()	()	()	9 (0.4)	29 (64)	
HG6.5E-E400SS23-34-VF	496 (19.5)	212 (8.3)	326 (12.8)	282 (11.1)	164 (6.5)	()	160 (6.3)	110 (4.3)	()	12 (0.5)	43 (95)	
HG10E-E400SS23-49-VF	555 (21.9)	212 (8.3)	326 (12.8)	338 (13.3)	175 (6.9)	()	160 (6.3)	110 (4.3)	()	12 (0.5)	57 (126)	
HG12F-E400SS23-54-VF	570 (22.4)	290 (11.4)	352 (13.9)	345 (13.6)	184 (7.2)	()	200 (7.9)	200 (7.9)	()	12 (0.5)	60 (132)	
HG19G-E400SS23-63-VF	678 (26.7)	293 (11.5)	328 (12.9)	376.5 (14.8)	185 (7.3)	220 (8.7)	()	()	()	12.5 (0.5)	120 (265)	
HG19G-E400SS23-79-VF	678 (26.7)	293 (11.5)	328 (12.9)	376.5 (14.8)	185 (7.3)	220 (8.7)	()	()	()	12.5 (0.5)	120 (265)	

Model	Dimensions, mm (in)										Weight
	L	W	H	A	B	C	CF	CB	D	E	kg (lbs)
HG26G- E400SS23-100-K	641 (25.2)	323 (12.7)	374 (14.7)	383 (15.1)	194 (7.6)	220 (8.7)	()	()	()	14 (0.6)	120 (265)
HG35G- E400SS23-130-K	742 (29.2)	323 (12.7)	374 (14.7)	482 (19.0)	196 (7.7)	220 (8.7)	()	()	()	14 (0.6)	175 (386)
HG45C- E400SS23-90-K	964 (38.0)	392 (15.4)	480 (18.9)	204 (8.0)	455 (17.9)	340 (13.4)	()	()	()	18 (0.7)	198 (437)
HG65C- E400SS23-120-K	1'043 (41.1)	402 (15.8)	543 (21.4)	309 (12.2)	455 (17.9)	340 (13.4)	()	()	124 (4.9)	18 (0.7)	316 (698)
HG80C- E400SS23-180-K	1'086 (42.8)	392 (15.4)	480 (18.9)	309 (12.2)	439 (17.3)	340 (13.4)	()	()	120 (4.7)	18 (0.7)	320 (706)

CONNECTIONS

Model	Connections		
	Pressure Line, P	Return Line, T	Drain Line, D
HG3.5S-SE230SE23-15-VF	BSPP 1/2	BSPP 1/2	06L-M12x1.5-Male
HG5S-E230SE23-21-VF	BSPP 1/2	BSPP 1/2	06L-M12x1.5-Male
HG6.5E-E400SS23-34-VF	BSPP 1/2	BSPP 1/2	06L-M12x1.5-Male
HG10E-E400SS23-49-VF	BSPP 1/2	BSPP 1/2	06L-M12x1.5-Male
HG12F-E400SS23-54-VF	BSPP 1/2	BSPP 1/2	06L-M12x1.5-Male
HG19G-E400SS23-63-VF	BSPP 1/2	BSPP 1/2	06L-M12x1.5-Male
HG19G-E400SS23-79-VF	BSPP 3/4	BSPP 1	BSPP 1/4
HG26G-E400SS23-100-K	BSPP 3/4	BSPP 1	BSPP 1/4
HG35G-E400SS23-130-K	BSPP 3/4	BSPP 3/4	M22x1.5
HG45C-E400SS23-90-K	BSPP 1	BSPP 1	M22x1.5
HG65C-E400SS23-120-K	BSPP 1	BSPP 1	M22x1.5
HG80C-E400SS23-180-K	BSPP 1	BSPP 1	M22x1.5

TECHNICAL SPECIFICATIONS

		HG3.5S- SE230SE23-15- VF	HG5S- E230SE23-21- VF	HG6.5E- E400SS23-34- VF	HG10E- E400SS23-49- VF
OUTPUT CHARACTERISTICS					
Output power	kVA	3.5	5	6.5	10
Output Voltage	V	230 / -	230 / -	230 / 400	230 / 400
Nominal Current	A	15.2 / -	21.7 / -	14.2 / 9.4	21.7 / 14.4
Frequency	Hz	50	50	50	50
Power Factor	1 phase / 3 phase	1 / -	1 / -	1 / 0.8	1 / 0.8
Phase	1 phase / 3 phase	x / -	x / -	x / x	x / x
IP (NEMA)		23	23	23	23
Voltage regulator		Capasitor	Capasitor	AVR	AVR
Sockets	1 phase / 3 phase / cable	2 / - / -	2 / - / -	2 / 1 / -	2 / 1 / -
HYDRAULIC POWER REQUIREMENTS					
Flow min.	l/min (gpm)	18 (4.76)	23 (6.08)	37 (9.78)	52 (13.74)
Flow max.	l/min (gpm)	23 (6.08)	35 (9.25)	55 (14.53)	78 (20.61)
Pressure @ nominal output	bar (psi)	230 (3'336)	220 (3'191)	180 (2'611)	180 (2'611)
Pressure max.	bar (psi)	250 (3'626)	250 (3'626)	210 (3'046)	210 (3'046)
Pressure when unloaded	bar (psi)	30 (435)	30 (435)	35 (508)	40 (580)
HYDRAULIC FLUID REQUIREMENTS					
Viscosity	cSt	10-200 / optimum 25-35	10-200 / optimum 25-35	10-200 / optimum 25-35	10-200 / optimum 25-35
Temperature max.	°C(°F)	70 (158)	70 (158)	70 (158)	70 (158)
Filter ratio	µm	25 >	25 >	25 >	25 >
Cooling capacity requirements	KW	1.3	1.8	2.4	3.2

		HG12F- E400SS23-54- VF	HG19G- E400SS23-63- VF	HG19G- E400SS23-79- VF	HG26G- E400SS23-100- K
OUTPUT CHARACTERISTICS					
Output power	kVA	12	19	19	26
Output Voltage	V	230 / 400	230 / 400	230 / 400	230 / 400
Nominal Current	A	26.1 / 17.3	41.4 / 27.4	41.4 / 27.4	56.3 / 37.5
Frequency	Hz	50	50	50	50
Power Factor	1 phase / 3 phase	1 / 0.8	1 / 0.8	1 / 0.8	- / 0.8
Phase	1 phase / 3 phase	x / x	x / x	x / x	x / x
IP (NEMA)		23	23	23	23
Voltage regulator		AVR	AVR	AVR	AVR
Sockets	1 phase / 3 phase / cable	2 / 1 / -	2 / 2 / x	2 / 2 / x	- / - / x
HYDRAULIC POWER REQUIREMENTS					
Flow min.	l/min (gpm)	56 (14.80)	66 (17.44)	83 (21.93)	106 (28.01)
Flow max.	l/min (gpm)	84 (22.19)	99 (26.16)	113 (29.85)	130 (34.35)
Pressure @ nominal output	bar (psi)	180 (2'611)	250 (3'626)	190 (2'756)	230 (3'336)
Pressure max.	bar (psi)	210 (3'046)	260 (3'771)	280 (4'061)	250 (3'626)
Pressure when unloaded	bar (psi)	30 (435)	40 (580)	30 (435)	30 (435)
HYDRAULIC FLUID REQUIREMENTS					
Viscosity	cSt	10-200 / optimum 25-35	10-200 / optimum 25-35	10-200 / optimum 25-35	10-200 / optimum 25-35
Temperature max.	°C(°F)	70 (158)	70 (158)	70 (158)	70 (158)
Filter ratio	µm	25 >	25 >	25 >	25 >
Cooling capacity requirements	KW	3.9	4.6	4.6	6.1

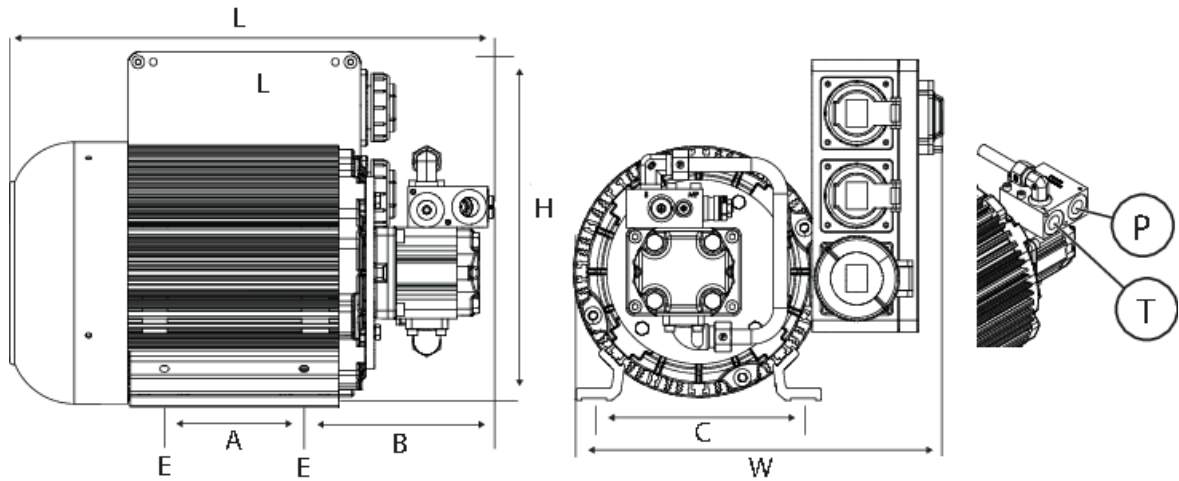
		HG35G- E400SS23-130- K	HG45C- E400SS23-90-K	HG65C- E400SS23-120- K	HG80C- E400SS23-180- K
OUTPUT CHARACTERISTICS					
Output power	kVA	35	45	65	80
Output Voltage	V	230 / 400	230 / 400	230 / 400	230 / 400
Nominal Current	A	75 / 50.5	97.4 / 64.9	140.7 / 93.8	173.2 / 115.4
Frequency	Hz	50	50	50	50
Power Factor	1 phase / 3 phase	- / 0.8	- / 0.8	- / 0.8	- / 0.8
Phase	1 phase / 3 phase	x / x	x / x	x / x	x / x
IP (NEMA)		23	23	23	23
Voltage regulator		AVR	AVR	AVR	AVR
Sockets	1 phase / 3 phase / cable	- / - / x	- / - / x	- / - / x	- / - / x
HYDRAULIC POWER REQUIREMENTS					
Flow min.	l/min (gpm)	137 (36.20)	93 (24.57)	123 (32.50)	183 (48.35)
Flow max.	l/min (gpm)	170 (44.91)	123 (32.50)	153 (40.42)	213 (56.27)
Pressure @ nominal output	bar (psi)	220 (3'191)	370 (5'366)	360 (5'221)	330 (4'786)
Pressure max.	bar (psi)	250 (3'626)	420 (6'092)	420 (6'092)	420 (6'092)
Pressure when unloaded	bar (psi)	30 (435)	30 (435)	30 (435)	30 (435)
HYDRAULIC FLUID REQUIREMENTS					
Viscosity	cSt	10-200 / optimum 25-35	10-200 / optimum 25-35	10-200 / optimum 25-35	10-200 / optimum 25-35
Temperature max.	°C(°F)	70 (158)	70 (158)	70 (158)	70 (158)
Filter ratio	µm	25 >	25 >	25 >	25 >
Cooling capacity requirements	KW	7.8	12	16	24



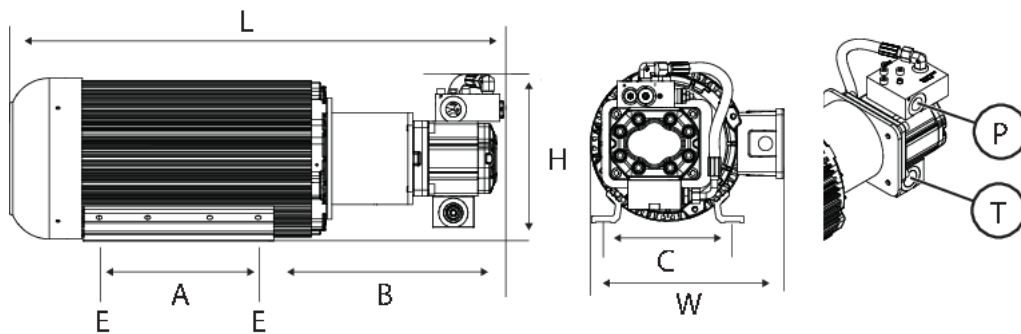
**HG HYDRAULIC GENERATORS
50HZ IP23 SUPER COMPACT MODELS**

2. 50HZ IP54 MODELS

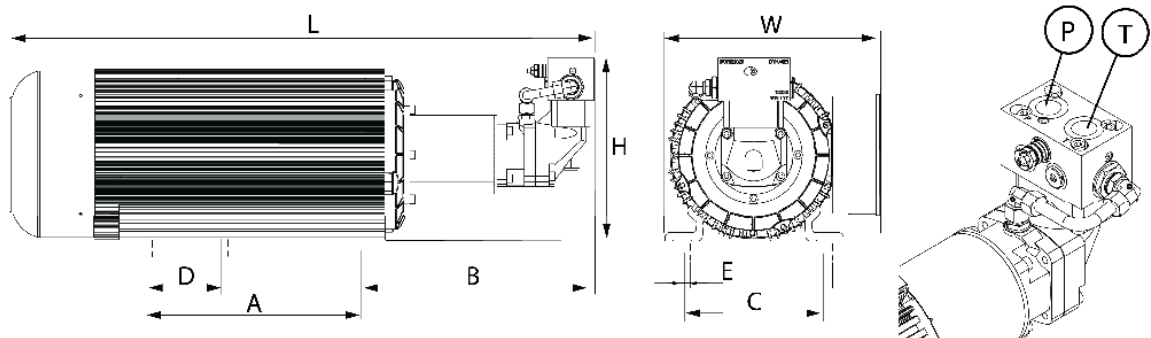
**HG4,1W , HG6,6W , HG10,1W ,
HG12,1W**



HG15,1W , HG20,1W



HG30,1W



DIMENSION & CONNECTIONS

SOCKET MODELS

Model	Dimensions, mm (in)								Weight
	L	W	H	A	B	C	D	E	kg (lbs)
HG4.1W-E230SE54-25-VF	476 (18.7)	381 (15.0)	352 (13.9)	178 (7.0)	165 (6.5)	216 (8.5)	()	11.5 (0.5)	43.5 (96)
HG6.6W-E400ST54-34-VF	458 (18.0)	379 (14.9)	354 (13.9)	178 (7.0)	140 (5.5)	216 (8.5)	()	11.5 (0.5)	56.5 (125)
HG10.1W-E400ST54-49-VF	517 (20.4)	379 (14.9)	354 (13.9)	178 (7.0)	186 (7.3)	216 (8.5)	()	11.5 (0.5)	68 (150)
HG12.1W-E400ST54-54-VF	519 (20.4)	449 (17.7)	391 (15.4)	178 (7.0)	188 (7.4)	216 (8.5)	()	11.5 (0.5)	68 (150)

CABLE MODELS

Model	Dimensions, mm (in)								Weight
	L	W	H	A	B	C	D	E	kg (lbs)
HG15.1W-E400ST54-63-VF	567 (22.3)	449 (17.7)	392 (15.4)	178 (7.0)	208 (8.2)	216 (8.5)	()	11.5 (0.5)	98 (216)
HG20.1W-E400ST54-78-VF	800 (31.5)	449 (17.7)	392 (15.4)	278 (10.9)	389 (15.3)	216 (8.5)	()	11.5 (0.5)	120 (265)
HG30.1W-E400ST54-90-K	()	()	()	381 (15.0)	447 (17.6)	267 (10.5)	127 (5.0)	14 (0.6)	185 (408)

CONNECTIONS

Model	Connections		
	Pressure Line, P	Return Line, T	Drain Line, D
HG4.1W-E230SE54-25-VF	BSPP 1/2	BSPP 1/2	06L-M12x1.5-Male
HG6.6W-E400ST54-34-VF	BSPP 1/2	BSPP 1/2	06L-M12x1.5-Male
HG10.1W-E400ST54-49-VF	BSPP 1/2	BSPP 1/2	06L-M12x1.5-Male
HG12.1W-E400ST54-54-VF	BSPP 1/2	BSPP 1/2	06L-M12x1.5-Male
HG15.1W-E400ST54-63-VF	BSPP 1/2	BSPP 1/2	06L-M12x1.5-Male
HG20.1W-E400ST54-78-VF	BSPP 3/4	BSPP 1	06L-M12x1.5-Male
HG30.1W-E400ST54-90-K	BSPP 1	BSPP 1	M22x1.5

TECHNICAL SPECIFICATIONS

		HG4.1W- E230SE54-25- VF	HG6.6W- E400ST54-34- VF	HG10.1W- E400ST54-49- VF	HG12.1W- E400ST54-54- VF
OUTPUT CHARACTERISTICS					
Output power	kVA	4.1	6.6	10.1	12.1
Output Voltage	V	230 / -	230 / 400	230 / 400	230 / 400
Nominal Current	A	17.8 / -	14.3 / 9.5	21.7 / 14.6	26.1 / 17.5
Frequency	Hz	50	50	50	50
Power Factor	1 phase / 3 phase	1 / -	1 / 0.8	1 / 0.8	1 / 0.8
Phase	1 phase / 3 phase	x / -	x / x	x / x	x / x
IP (NEMA)		54	54	54	54
Voltage regulator		AVR	AVR	AVR	AVR
Sockets	1 phase / 3 phase / cable	2 / - / -	2 / 1 / -	2 / 1 / -	2 / 2 / -
HYDRAULIC POWER REQUIREMENTS					
Flow min.	l/min (gpm)	28 (7.40)	37 (9.78)	52 (13.74)	58 (15.32)
Flow max.	l/min (gpm)	37 (9.78)	51 (13.47)	73 (19.29)	81 (21.40)
Pressure @ nominal output	bar (psi)	140 (2'031)	180 (2'611)	180 (2'611)	200 (2'901)
Pressure max.	bar (psi)	210 (3'046)	210 (3'046)	210 (3'046)	210 (3'046)
Pressure when unloaded	bar (psi)	35 (508)	35 (508)	40 (580)	50 (725)
HYDRAULIC FLUID REQUIREMENTS					
Viscosity	cSt	10-200 / optimum 25-35	10-200 / optimum 25-35	10-200 / optimum 25-35	10-200 / optimum 25-35
Temperature max.	°C(°F)	70 (158)	70 (158)	70 (158)	70 (158)
Filter ratio	µm	25 >	25 >	25 >	25 >
Cooling capacity requirements	KW	1.6	2.4	3.1	3.5

		HG15.1W- E400ST54-63- VF	HG20.1W- E400ST54-78- VF	HG30.1W- E400ST54-90-K
OUTPUT CHARACTERISTICS				
Output power	kVA	15.1	20.1	30.1
Output Voltage	V	230 / 400	230 / 400	230 / 400
Nominal Current	A	32.6 / 21.8	43.7 / 29	65.2 / 43.3
Frequency	Hz	50	50	50
Power Factor	1 phase / 3 phase	1 / 0.8	1 / 0.8	- / 0.8
Phase	1 phase / 3 phase	x / x	x / x	x / x
IP (NEMA)		54	54	54
Voltage regulator		AVR	AVR	AVR
Sockets	1 phase / 3 phase / cable	2 / 1 / -	2 / 1 / -	- / - / x
HYDRAULIC POWER REQUIREMENTS				
Flow min.	l/min (gpm)	65 (17.17)	82 (21.66)	95 (25.10)
Flow max.	l/min (gpm)	85 (22.46)	97 (25.63)	120 (31.70)
Pressure @ nominal output	bar (psi)	200 (2'901)	200 (2'901)	280 (4'061)
Pressure max.	bar (psi)	210 (3'046)	210 (3'046)	420 (6'092)
Pressure when unloaded	bar (psi)	35 (508)	50 (725)	50 (725)
HYDRAULIC FLUID REQUIREMENTS				
Viscosity	cSt	10-200 / optimum 25-35	10-200 / optimum 25-35	10-200 / optimum 25-35
Temperature max.	°C(°F)	70 (158)	70 (158)	70 (158)
Filter ratio	µm	25 >	25 >	25 >
Cooling capacity requirements	KW	3.9	4.5	-



**HG HYDRAULIC GENERATORS
50HZ IP54 MODELS**



PARTNER OF YOUR MACHINE

Menotie 3
FI-33470 Ylöjärvi, Finland
tel: +358 3 3488 200
info@DYNASET.com



ELECTRICITY

HG Hydraulic Generator
HGV POWER BOX Variable Hydraulic
Generator System
HGV Variable Hydraulic Generator System
HWG Hydraulic Welding Generator
HGG Hydraulic Ground Power Generator



HIGH PRESSURE WATER

HPW Hydraulic High Pressure Water Pump
HPW Hydraulic Power Washer
KPL High Pressure Street Washing Unit
KPL-WEED Weed Killing Unit
SCU Surface Cleaning Unit
HPW-DUST High Pressure Dust Suppression
System
PPL High Pressure Pipe Cleaning Unit
HPW-FIRE High Pressure Firefighting System
FP Fire Fighting Piercing Kit
HDF Hydraulic Drilling Fluid Pump
JPL High Pressure Bin Washing System
HSP Hydraulic Submersible Pump



COMPRESSED AIR

HK Hydraulic Piston Compressor
HKL Hydraulic Rotary Vane Compressor
HKR Hydraulic Screw Compressor



MAGNET POWER

HMG PRO Hydraulic Magnet Generator
MAG Lift Magnet
HMAG PRO Hydraulic Magnet



VIBRATION

HVB Hydraulic Vibration Pump
HVD Hydraulic Directional Vibra
HRC Hydraulic Reversal Cylinder



POWER BOOSTING

HPI Hydraulic Pressure Intensifier
HPI-C Hydraulic Pressure Intensifier for
Cylinder



VACUUM

HCF Hydraulic Centrifugal Fan
HRVB Hydraulic Recycling Vacuum Bucket



KNOW-HOW

Hydraulic Power Take-off (PTO)
Hydraulic Power Unit Technology
HEU Hydraulic Expansion Unit
HRU Hydraulic Rescue Units
De-Icing Technology
Installation Valves
HHK Hydraulic Grinder
HV/HVY Hydraulic Winch / Winch Unit

www.DYNASET.com



[/dynaset](https://www.facebook.com/dynaset)



[/dynasetoy](https://www.youtube.com/dynasetoy)



[/Dynaset_ofcl](https://twitter.com/Dynaset_ofcl)



[/dynaset_official](https://www.instagram.com/dynaset_official)